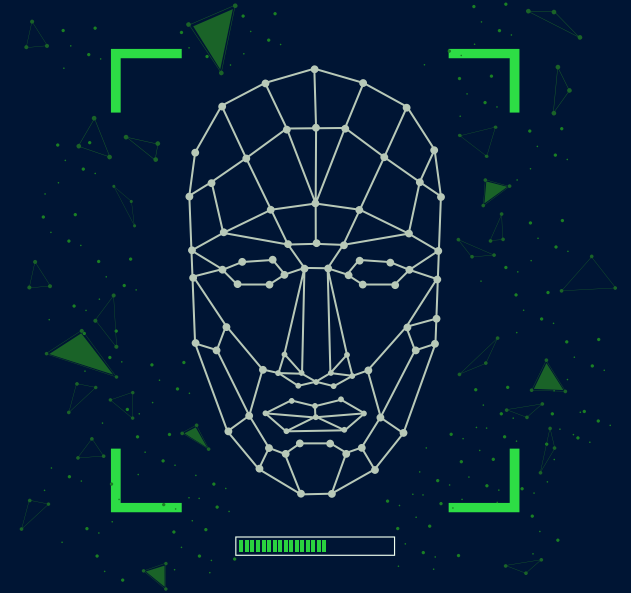


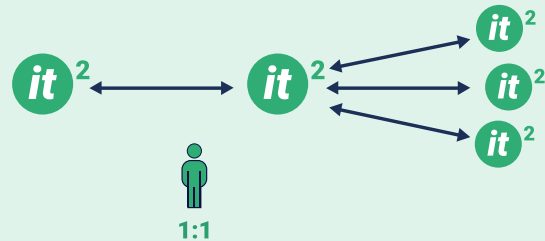
Biometric data can never be reset if stolen.



INTEROPERABLE

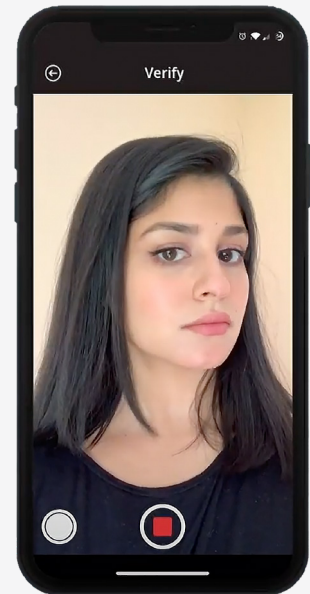


SECURE



Trust Stamp is used advanced artificial intelligence and machine learning techniques to transform biometric data into irreversibly transformed identity tokens it^2 s that facilitates secure interoperable identity proofing. But how does it work? Let's use facial biometric enrolment as an example. After scanning a user's face, a biometric template is generated. This data is highly sensitive and, if compromised, can never be reset like you would have stolen password.

Trust Stamps it^2 transformation algorithms destroy enough data and add enough random noise to make it impossible for anyone to reverse engineer of faith out of an it^2 , while preserving the properties that make them unique so they can still be used as accurate identifiers. The it^2 offers a Privacy positive approach for matching an identity against one or many other identities without using or storing any sensitive information, and our it^2 algorithms are designed to enable efficient deduplication. Even at large scales. We have retained the usefulness of biometric data while removing the risk.



IT^2 Created upon facial biometric enrolment